

Roberto Matta

Malitte



Dimensions:

W160 | D63 | H160 cm

W63 | D24,8 | H63 in

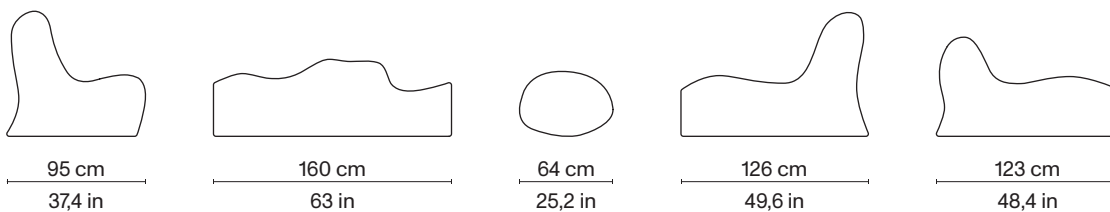
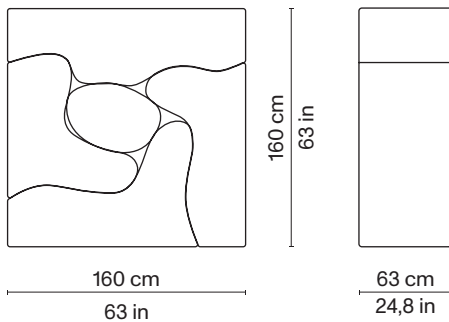
Materials:

polyurethane foam; upholstery in:

- slightly elastic fabric Pugi RG
- Silas wool Kvadrat/Raf Simons
- Divina 3 wool Kvadrat

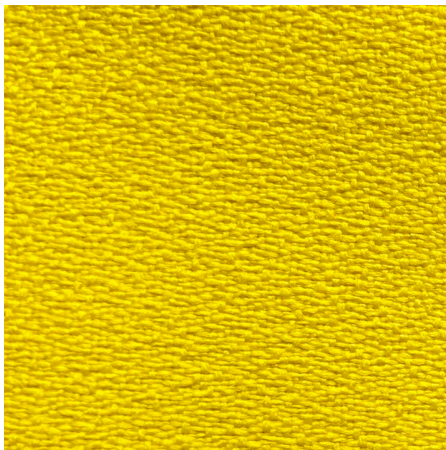
Malitte Outdoor:

polyurethane foam for outdoor use; upholstery in wateroil repellent and resistant to UVA rays MARIAFLORA fabrics



Roberto Matta

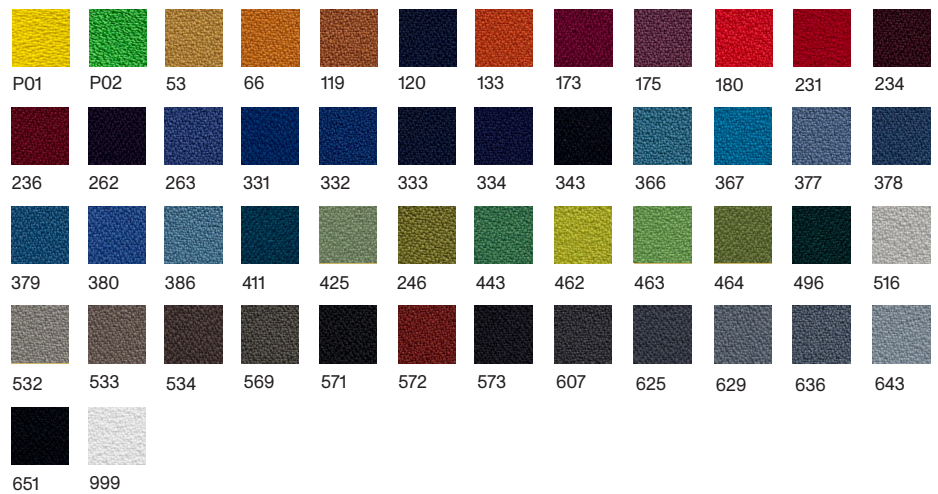
Malitte



Pugi RG
Mirage

Composition:
100% polyester

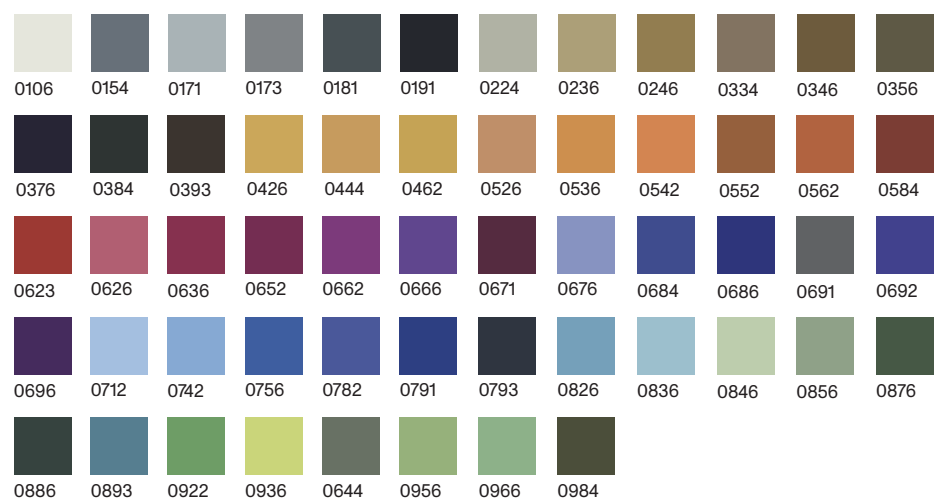
Available colours:



Kvadrat
Divina 3

Composition:
100% new wool

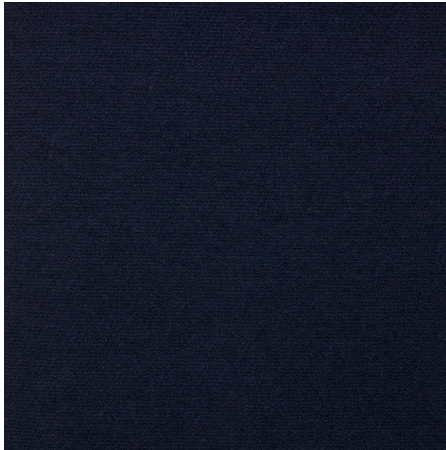
Available colours:



* Please note that colours displayed digitally may vary slightly from the actual product.

Roberto Matta

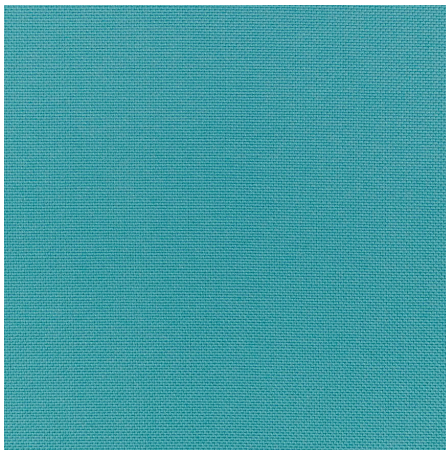
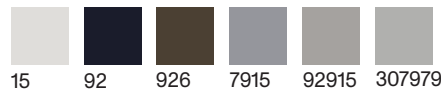
Malitte Outdoor



MARIAFLORA
Quercia

Composition: 100% solution dyed acrylic fiber In-outdoor. Water-oil repellent, resistant to UVA rays mould and stain resistant. Made in Italy

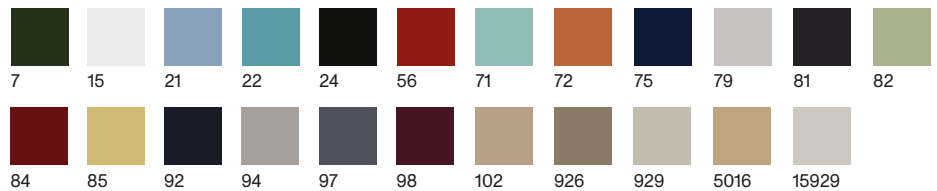
Available colours:



MARIAFLORA
Ginostra

Composition: 100% solution dyed acrylic fiber In-outdoor. Water-oil repellent, resistant to UVA rays mould and stain resistant. Made in Italy

Available colours:



* Please note that colours displayed digitally may vary slightly from the actual product.