

Kazuhide Takahama

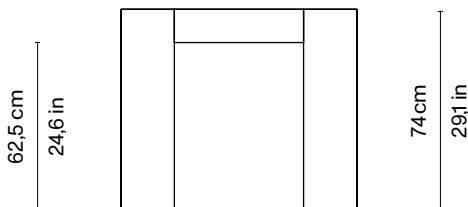
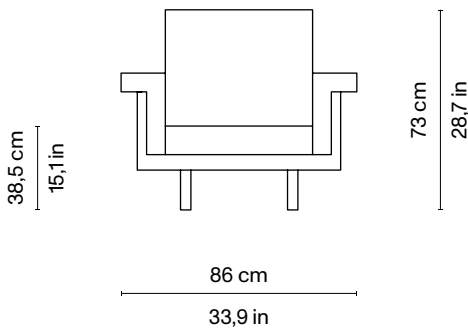
Naeko armchair

Special Edition by Kiko Kostadinov



Dimensions:
W86 | D74 | H73 cm
W33,9 | D29,1 | H28,7 in

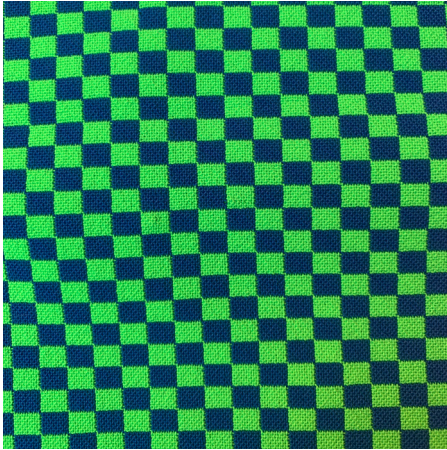
Materials:
cherry-wood structure, brass finishes, polyurethane foam padding,
upholstery in jacquard fabrics designed by Kiko Kostadinov and wo-
ol-blend Kvadrat fabrics



Kazuhide Takahama

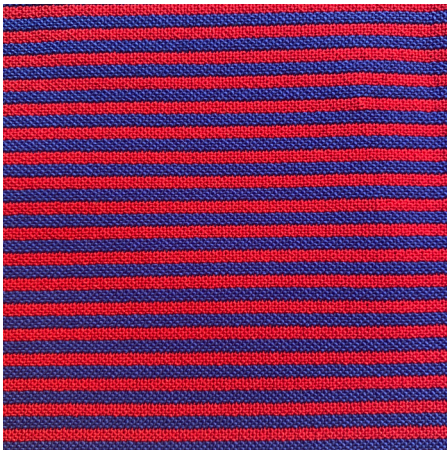
Naeko armchair

Special Edition by Kiko Kostadinov



Jacquard fabric designed by Kiko Kostadinov

Composition:
93% polyester, 6% elastane, 1% nylon



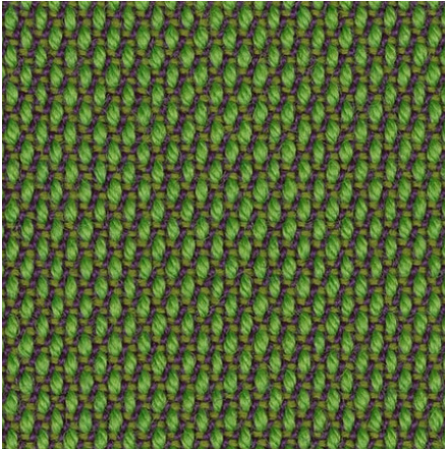
Jacquard fabric designed by Kiko Kostadinov

Composition:
93% polyester, 6% elastane, 1% nylon

Kazuhide Takahama

Naeko armchair

Special Edition by Kiko Kostadinov



Kvadrat
Steelcut Trio 3

Composition:
90% new wool, worsted, 10% nylon



Kvadrat
Steelcut Trio 3

Composition:
90% new wool, worsted, 10% nylon