

Augusto Betti

Noodle



Dimensions:

W 74 | D 60 | H 68 cm

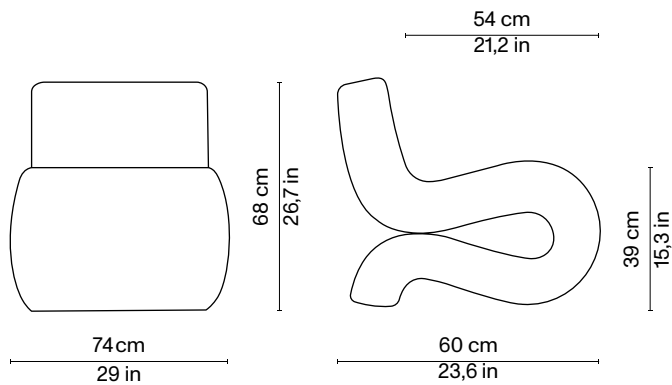
W 29 | D 23,6 | H 26,7 in

Materials:

shaped polyurethane, metal and plywood; upholstery in:

- wool worsted Kvadrat/Raf Simons

- cotton chenille Pierre Frey



Augusto Betti

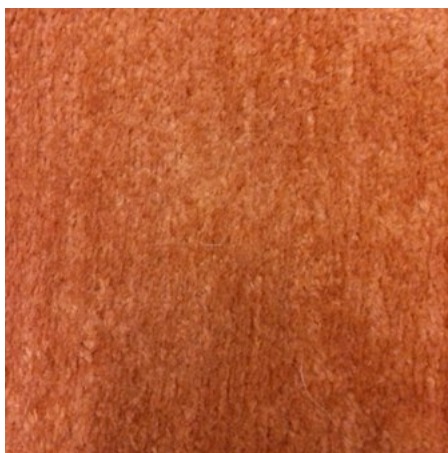
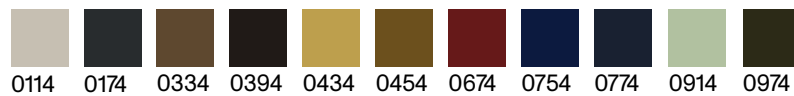
Noodle



Kvadrat/Raf Simons
Silas

Composition:
75% new wool worsted, 25% nylon

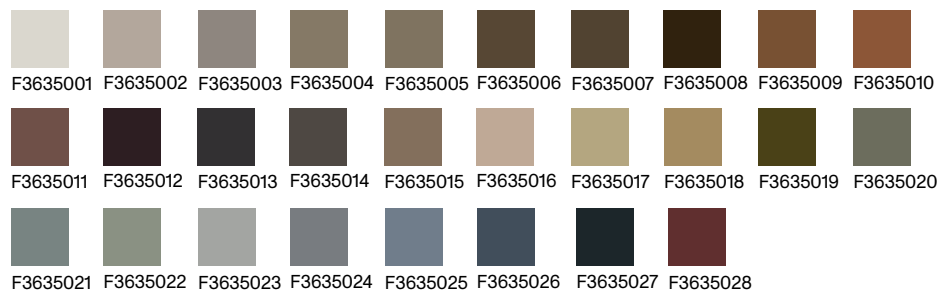
Available colours:



Pierre Frey
Cotton chenille igor

Composition:
84 % Cotton - 7 % Acrylic - 5 % Virgin wool - 2 % Polyamide - 2 % Alpaca

Available colours:



Special edition

Pierre Frey
Cotton chenille olga

Composition:
84 % Cotton - 7 % Acrylic - 5 % Virgin wool - 2 % Polyamide - 2 % Alpaca

* Please note that colours displayed digitally may vary slightly from the actual product.